



Darfield High School



Year 11
Level 1
2019



Use this simple formula to help you choose your course:

Occupation

You may not know what work you would like to do: this is not unusual. If you do know, or you do have some ideas about what you might like to do, you can find out what subjects possible careers need. Our Careers Advisor is there to help you think this through.

Interest

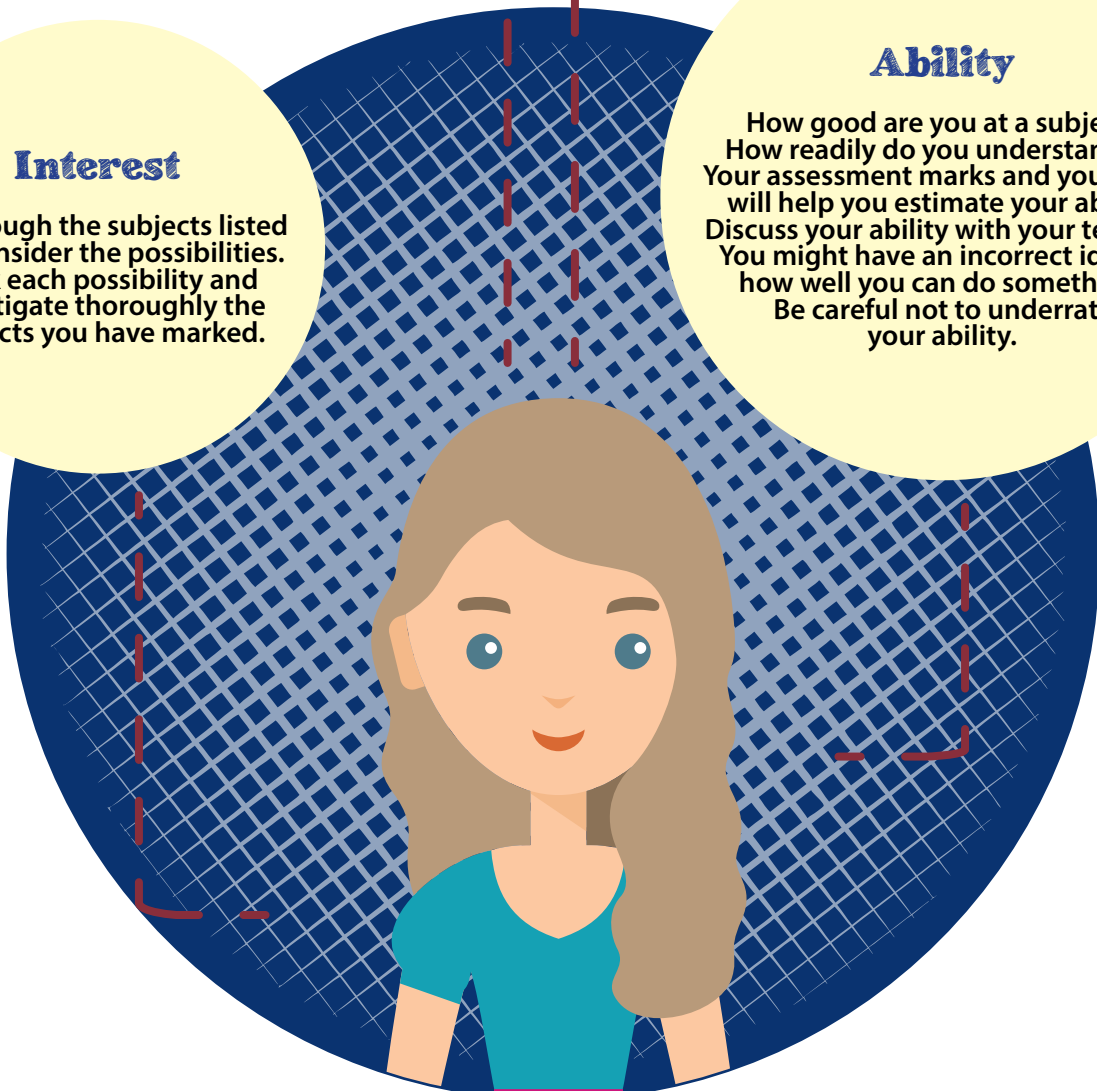
Add to your ability your interest, that is, what you enjoy doing. Reasons for enjoyment might be the subject, the work, your success at both, the teacher...

Interest

Go through the subjects listed and consider the possibilities. Mark each possibility and investigate thoroughly the subjects you have marked.

Ability

How good are you at a subject? How readily do you understand it? Your assessment marks and your work will help you estimate your ability. Discuss your ability with your teacher. You might have an incorrect idea of how well you can do something. Be careful not to underrate your ability.



Index

Accounting	11
Agricultural Science.....	9
Alternatives.....	18
Background Information For Careers.....	21
Commerce.....	11
Design and Visual Communication.....	15
Digital Technologies.....	15
Drama	13
Economics.....	11
Engineering Technologies.....	15
English, ESOL and Literacy.....	7
French.....	13
Furniture Making Technology.....	15
Geography	9
Health	17
History	9
Home Economics and Hospitality	17
Japanese.....	13
Mathematics	7
Music.....	13
Outdoor Education	18
Physical Education	17
Recommended Subjects For Year 13.....	22-23
Rural College.....	9
Science	7
Senior School Curriculum.....	4
Soft Materials Technology.....	17
Useful Websites	19
Visual Art	11
Virtual Learning Network.....	20

School Curriculum

The curriculum offered at Darfield High School enables every student to participate in the eight Learning Areas of the New Zealand Curriculum, in order to gain the knowledge and understanding needed for a broad and balanced education. They provide the context within which knowledge, skills, attitudes, and values are developed.

Subject combinations are arranged to suit the majority of students. Courses will run provided that there are sufficient students to form a class, that staffing is available, and that the requested combination of classes can be timetabled. **If a class size is too small to timetable, it may be possible for the student to be enrolled with the Virtual Learning Network.** (See page 19).

National Certificates, National Examinations, and NCEA are available at Years 11, 12 and 13.

Acceleration of the very able is a possibility and extension is encouraged in all subjects.

ESOL classes are offered at each year level to students whose first language is not English.

Senior School Curriculum

ESSENTIAL LEARNING AREAS	YEAR 11 NCEA LEVEL 1	YEAR 12 NCEA LEVEL 2	YEAR 13 NCEA LEVEL 3
ENGLISH	<ul style="list-style-type: none"> English ESOL 	<ul style="list-style-type: none"> English Media Studies ESOL 	<ul style="list-style-type: none"> English Media Studies ESOL
MATHEMATICS	<ul style="list-style-type: none"> Mathematics 	<ul style="list-style-type: none"> Mathematics 	<ul style="list-style-type: none"> Mathematics with Calculus Mathematics with Statistics
SCIENCES	<ul style="list-style-type: none"> Rural College Agricultural Science Science 	<ul style="list-style-type: none"> Rural College Biology Chemistry Physics General Science 	<ul style="list-style-type: none"> Rural College Biology Chemistry Physics General Science
SOCIAL SCIENCES	<ul style="list-style-type: none"> Economics Geography History Commerce Accounting (Course Offered in 2019) 	<ul style="list-style-type: none"> Economics Geography History Commerce 	<ul style="list-style-type: none"> Economics Geography History Business Studies Classical Studies
THE ARTS	<ul style="list-style-type: none"> Drama Music Visual Art 	<ul style="list-style-type: none"> Drama Music Visual Art (Painting, Sculpture and Printmaking) 	<ul style="list-style-type: none"> Drama Music Visual Art (Painting, Sculpture and Printmaking)
LANGUAGES	<ul style="list-style-type: none"> French Japanese 	<ul style="list-style-type: none"> French Japanese 	<ul style="list-style-type: none"> French Japanese
THE TECHNOLOGIES	<ul style="list-style-type: none"> Engineering/Construction Mechanical Technology Design and Visual Communication Digital Technologies Home Economics/Hospitality Soft Materials Furniture Making 	<ul style="list-style-type: none"> Engineering/Construction Mechanical Technology Design and Visual Communication Digital Technologies Food and Nutrition Technology Soft Materials Furniture Making Computer Programming 	<ul style="list-style-type: none"> Engineering/Construction Mechanical Technology Design and Visual Communication Digital Technologies Food and Nutrition Technology Computer Programming
PHYSICAL WELL-BEING	<ul style="list-style-type: none"> Physical Education Outdoor Education Health 	<ul style="list-style-type: none"> Physical Education Outdoor Education Health 	<ul style="list-style-type: none"> Physical Education Outdoor Education Health

YEAR 11

ENTRY TO ALL COURSES IS BY APPLICATION

The following factors will be taken into account when applications are processed:

- **Course prerequisites.**
- **Applicant's academic record.**
- **Class capacity.**
- **Applicant's work, study and self-management record.**

CLASS CAPACITY

Where there are more applications for places in a class than there are places available, students will receive preference if they meet the course pre-requisites, have a strong achievement record in the subject, have a sound work and study record, and have a sound self-management record.

APPLICANT'S WORK, STUDY AND SELF-MANAGEMENT RECORD

If an applicant's record of achievement, application, and attitude in a subject in the past has been poor and, if that applicant's being permitted entry to a limited entry course were to mean the exclusion of a student with a more positive record, then the applicant with the poorer record is unlikely to gain entry to the subject.

Entry to all courses is confirmed at the beginning of the next school year.

As part of The New Zealand Curriculum requirement, **all students must enrol in English or Māori, Science and Mathematics**, as well as a course of study in **three other subjects**.

It is important that in planning your Year 11 Course you keep in mind that, although many subjects can be taken up for the first time in Year 12, there are some subjects which lead from Year 11 to Year 12.

DISCRETIONARY ENTRY

Applications are considered by the Curriculum Manager, the Dean of Level, and either the Head of Department or the Teacher with Responsibility for the Subject.

Entry to all courses is confirmed at the beginning of the next school year.

QUALIFICATIONS

NATIONAL CERTIFICATE OF EDUCATIONAL ACHIEVEMENT (NCEA)

The National Certificate of Educational Achievement is New Zealand's national qualification for school leavers. NCEA uses assessments that are better suited to the skills and knowledge being assessed. It is not very sensible to assess how well students can do a speech by getting them to write about their speech. If you want to know how well students can carry out an experiment, it is a good idea to watch them do it and assess that. But there is still a place for exams and most of the usual school subjects still have exams.

Standards are used to show what students know and can do. Standards describe the level of work students have produced and how well they have done. There are TWO types of Standards Based Assessments: Achievement Standards and Unit Standards.

The New Zealand Qualifications Authority (NZQA) is directly responsible for assessment by Achievement Standard and, apart from some generic standards, Industry Training Organisations are responsible for assessment by Unit Standard. Credits from Achievement and Unit Standards contribute towards NCEA qualifications.

FOR ACHIEVEMENT STANDARDS

Grades are reported for each skill—Not Achieved, Achieved, Merit, Excellence (N, A, M, E).

FOR UNIT STANDARDS

Students receive Not Achieved or Achieved (N or A). Teachers will be able to explain to students exactly what they have to do to achieve the standard. Students will have to lift their performance to that standard. Unit Standards are available only in industry training subjects, eg Rural College.

Standards have also been set to challenge and reward students. If students do particularly well in an achievement standard assessment, they can gain Merit or Excellence. Standards have different credit values depending on the amount of learning involved. In Art, for example, the portfolio is about six months' work and so has 12 credits.

CREDITS

- **Credits are like points towards a qualification.**
- **Most full year courses will offer about 18–24 Credits.**
- **Every standard is worth a set number of credits: giving a speech, for example, is worth three credits.**

COLLECTING CREDITS FOR NCEA LEVEL 1

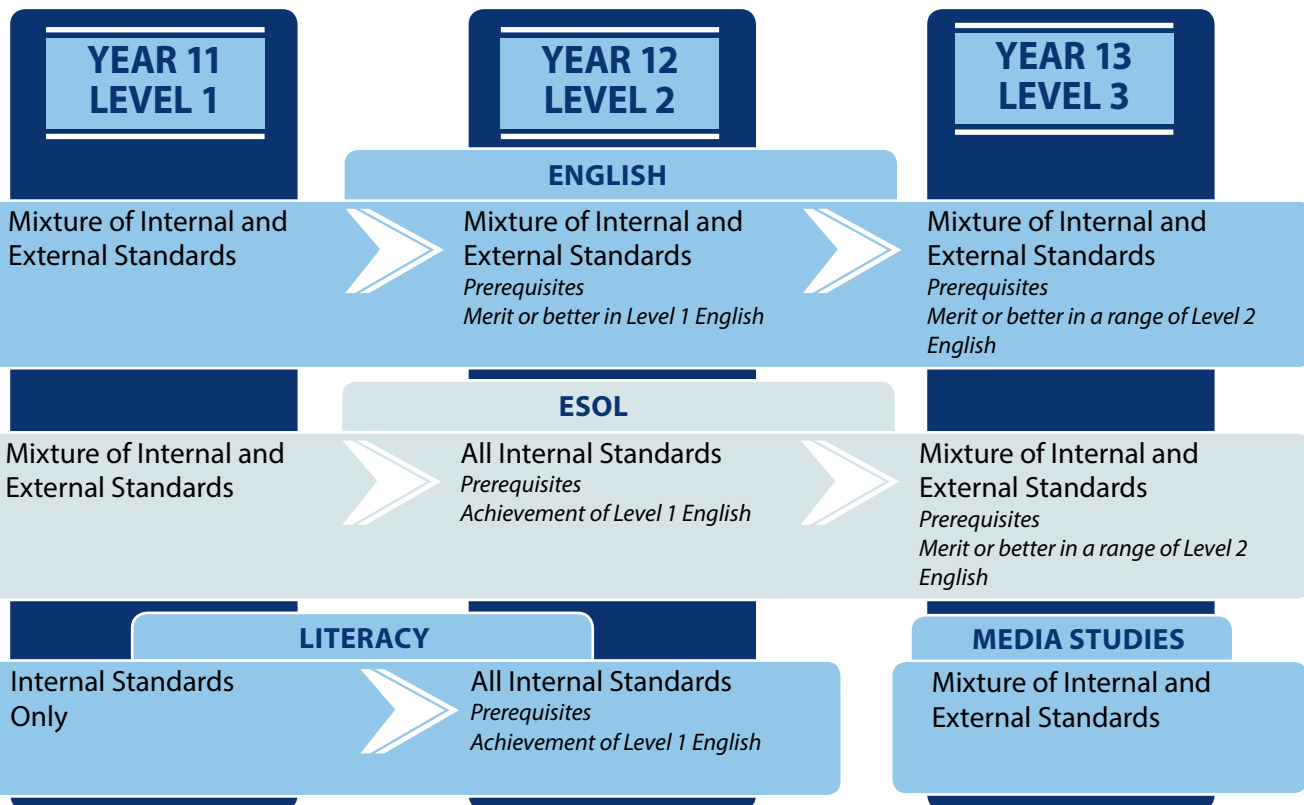
80 Credits at Level 1 or above, including ten credits in Literacy and ten credits in Numeracy, are needed for National Certificate of Educational Achievement Level 1. The reading, writing and number skills come from a range of subjects.

COMPULSORY PROGRAMMES

All students must attend the compulsory programmes in Health and Transition.

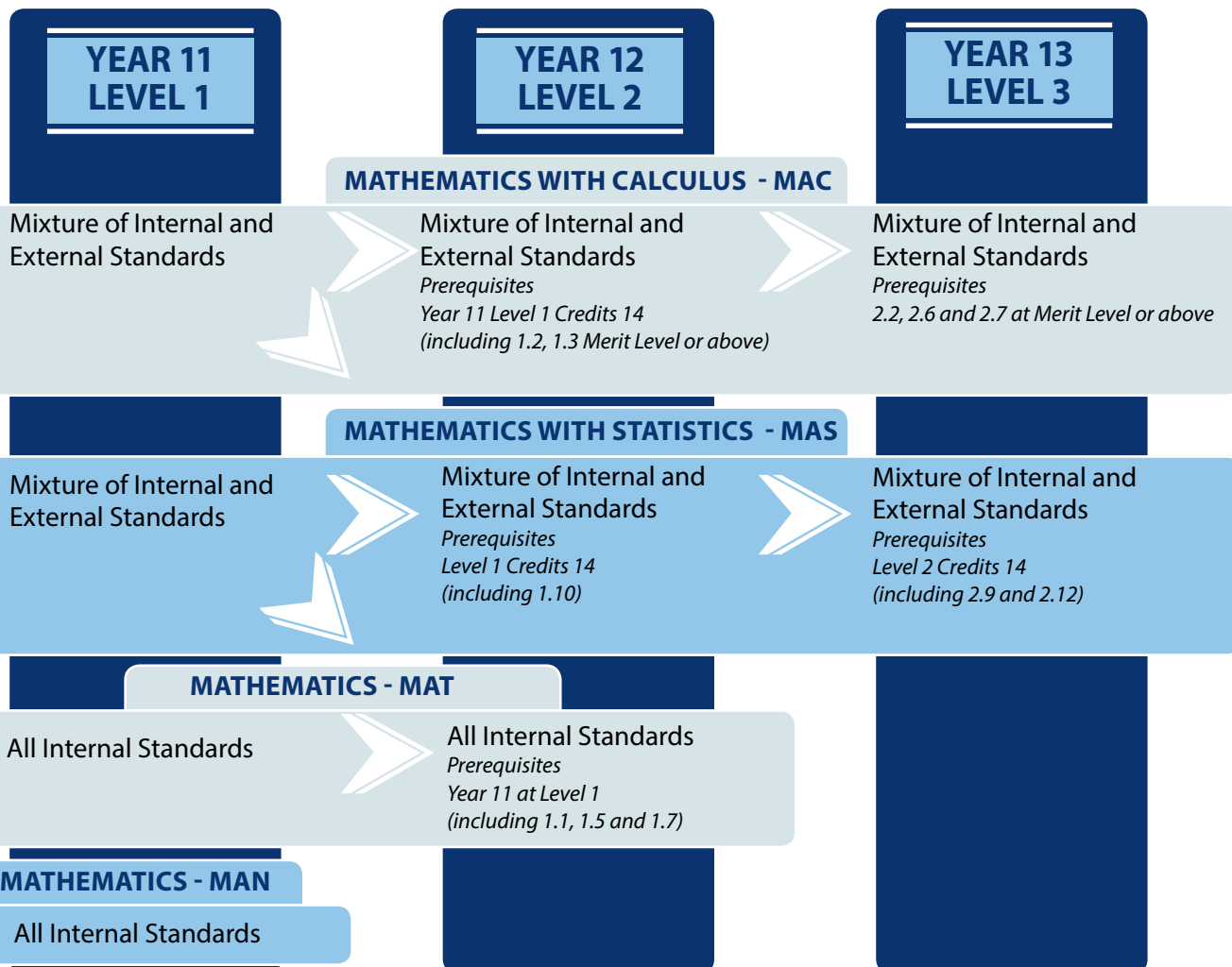
Senior English Progression

English is not compulsory after Year 11. The Head of Department will place students in an appropriate course.



Senior Mathematics Progression

Mathematics is not compulsory after Year 11. The Head of Department will place students in an appropriate course.



YEAR 10

English

NCEA Level 1 English

CREDITS AND ASSESSMENT

10–24 Credits.

ENTRY CONDITIONS

Compulsory: English is compulsory at Year 11. Students will be placed into appropriate classes based on their performance and ability in Year 10.

THIS COURSE LEADS TO

Depending on the course a student is placed in, their English studies may terminate at the end of NCEA Level 1 or Level 2, or may progress to Level 3.

TEACHER IN CHARGE

Mrs Ferguson-Brown.

NCEA Level 1 ESOL

CREDITS AND ASSESSMENT

English and ESOL credits will be offered at the discretion of the teacher.

ENTRY CONDITIONS

Open: for any student whose first language is not English. Students are tested to identify their level of English but are encouraged to do eight hours of ESOL.

WHAT IS THE COURSE ABOUT?

This course will develop the four language skills (Speaking, Listening, Reading, Writing), working towards building up the student's language skills in order to possibly attempt Literacy Level 1 and ESOL credits.

THIS COURSE LEADS TO

Beginning NCEA Level 2 Literacy and NCEA Level 2 ESOL.

APPROXIMATE COST

\$20.00 Ring binder, refill and dividers.

TEACHER IN CHARGE

Mr Tsavousis.

NCEA Level 1 Literacy

ENTRY CONDITIONS

Compulsory: English is compulsory at Year 11. Students will be placed into appropriate classes based on their performance and ability in Year 10.

THIS COURSE LEADS TO

NCEA Level 1 English.

WHAT IS THE COURSE ABOUT?

This is a course for students who do not intend to take NCEA Level 2 English. Students will work on oral and written literacy skills to support them in their life beyond school. These will include skills such as reading and filling in forms correctly, oral communication skills for formal interactions, and understanding tenancy agreements and contracts, etc.

TEACHER IN CHARGE

Mrs Ferguson-Brown.

Mathematics

NCEA Level 1 Mathematics

CREDITS AND ASSESSMENT

16–21 Credits.

ENTRY CONDITIONS

Compulsory: Mathematics is compulsory at Year 11. Students will be placed into appropriate classes based on their performance and ability in Year 10.

WHAT IS THE COURSE ABOUT?

This course is designed to provide students with the opportunity to gain the numeracy credits required to attain an NCEA Level One Certificate. The course aims to improve students' everyday mathematical skills and covers the topics of number, measurement, geometry and statistics.

THIS COURSE LEADS TO

Depending on the course a student is placed in, their Mathematics studies may terminate at the end of NCEA Level 1 or Level 2, or may progress to Level 3.

APPROXIMATE COST

\$30.00—\$36.00 A series of workbooks. Students will need a scientific or graphics calculator (graphics calculator advisable.)

TEACHER IN CHARGE

Mrs Whyte.

Sciences

NCEA Level 1 Science

CREDITS AND ASSESSMENT

16–20 Internal Credits.

ENTRY CONDITIONS

Compulsory: Science is compulsory at Year 11. Students will be placed into appropriate classes based on their performance and ability in Year 10. Students enrolling in Rural College may choose to do Agricultural Science.

WHAT IS THE COURSE ABOUT?

The course is about developing an understanding of the science that is relevant to everyday life.

Senior Science Progression

All Level 2 Science courses have prerequisites for automatic entry. You should be aware of these if you intend to progress through to Levels 2 and 3 Sciences.

YEAR 10

YEAR 11
LEVEL 1

SCIENCE

Credits 16-20

YEAR 12
LEVEL 2

GENERAL SCIENCE

Internal Credits 19
External Credits 4

YEAR 13
LEVEL 3

Internal Credits 16
External Credits 4

BIOLOGY

Internal Credits 7
External Credits 12

Internal Credits 10
External Credits 8

CHEMISTRY

Internal Credits 7
External Credits 13

Internal Credits 6
External Credits 15

PHYSICS

Internal Credits 7
External Credits 12

Internal Credits 4
External Credits 16

AGRICULTURAL
SCIENCE

Internal Credits 26
*AG ITO Level 2
Unit Standards
(Like Rural College)*



THIS COURSE LEADS TO

NCEA Level 2 Biology, Physics, Chemistry or General Science.

APPROXIMATE COST

\$30.00.

TEACHER IN CHARGE

Mr Maude.

NCEA Level 1 Agricultural Science

CREDITS AND ASSESSMENT

26 Internal Credits through Level 2 ITO Unit Standards.

ENTRY CONDITIONS

Automatic: for students who are enrolled in Rural College.
Discretionary (see Page 5).

WHAT IS THE COURSE ABOUT?

Agricultural Science is a course that has been designed to support what is learned in Rural College. By learning the Science behind the work done, a deeper understanding of why things happen the way they do will be developed.

THIS COURSE LEADS TO

Supports Rural College Level 1.

TEACHER IN CHARGE

Mr Smith.

Rural College

NCEA Level 1 Rural College

CREDITS AND ASSESSMENT

30–36 Internal Credits.

ENTRY CONDITIONS

Discretionary (see Page 5).

WHAT IS THE COURSE ABOUT?

Rural College Year 1 is based around the operation of basic farm machinery, such as tractors, motorbikes and ATVs. Also included are correct procedures for working with cattle and sheep. Electric and non-electric fence systems are also studied along with some basic horticulture options. Dependent on numbers, there may be two options, one practical and one with a more academic focus.

THIS COURSE LEADS TO

NCEA Level 2 Rural College.

APPROXIMATE COST

\$200.00 Paid in full or instalments by arrangement.

TEACHER IN CHARGE

Mr Smith.

Social Sciences

NCEA Level 1 Geography

CREDITS AND ASSESSMENT

13 Internal Credits.
12 External Credits.

ENTRY CONDITIONS

Open.

WHAT IS THE COURSE ABOUT?

Geography is about places. This course investigates how people interact with their surroundings. We look at how places are shaped by extreme natural events, such as earthquakes, how people can develop their lifestyles based on sustainable resources, and how populations of people affect, and are affected by, where they live. Students also study some geographical issues, such as irrigation or urban growth, and we look at global studies, such as global access to water.

THIS COURSE LEADS TO

NCEA Level 2 Geography.

APPROXIMATE COST

\$23.00 Geography Skills Workbook
Plus Field Trip Costs.

TEACHER IN CHARGE

Mr Quinn.

NCEA Level 1 History

CREDITS AND ASSESSMENT

12 Internal Credits.
8 External Credits.

ENTRY CONDITIONS

Open: Good reading, writing and communication skills required.

WHAT IS THE COURSE ABOUT?

History presents students with the dilemmas, choices, and beliefs of people in the past. It invites them to ask, and helps them answer, today's questions by engaging with the past and imagining and speculating on possible futures. An awareness of history inspires students to become confident, questioning, and empathetic individuals. Students will employ robust research methods, critically evaluate evidence and learn to view events from differing perspectives. There will be an inquiry-based assessment on events significant to New Zealand History, plus two comprehensive studies: *The Origins of World War Two* and the *Black Civil Rights Movement in the USA*.

THIS COURSE LEADS TO

NCEA Level 2 History.

TEACHER IN CHARGE

Mrs Lee.

Senior Social Science Progression

Levels 2 and 3 subjects may have prerequisites.

YEAR 10

YEAR 11 LEVEL 1

Internal Credits 12
External Credits 8
Open Entry

YEAR 12 LEVEL 2

Internal Credits 14
External Credits 10
Prerequisites
History Level 1 Credits 16
or English Level 1 Credits 16
(Reading or Writing 10)

YEAR 13 LEVEL 3

Internal Credits 15
External Credits 10
Prerequisites
History Level 2 Credits 14
or English Level 2 Credits 16
(Reading or Writing 10)

HISTORY

GEOGRAPHY

ECONOMICS

COMMERCE

BUSINESS STUDIES

ACCOUNTING

CLASSICAL STUDIES

Course Offered in 2019

Course Offered in 2020

Course Offered in 2021

Internal Credits 12
External Credits 10
Prerequisites
English or History Merit Credits
or by Discretion

NCEA Level 1 Economics

CREDITS AND ASSESSMENT

- 8 Internal Credits.
- 8 External Credits.

ENTRY CONDITIONS

Open.

WHAT IS THE COURSE ABOUT?

Economics is the study of how individuals and groups choose to satisfy their unlimited wants while having only limited means. We look at how consumers and producers work together in the market place and how their interaction results in economic decision making about what will be produced and the process of production. Major topics studied are: Consumers, Producers and the Market.

THIS COURSE LEADS TO

NCEA Level 2 Economics.

APPROXIMATE COST

\$25.00 Workbook.

TEACHER IN CHARGE

Ms Harrington.

NCEA Level 1 Commerce

CREDITS AND ASSESSMENT

- 12 Internal Credits.
- 8 External Credits.

ENTRY CONDITIONS

Open.

WHAT IS THE COURSE ABOUT?

The course is about the practical planning and preparation of running a business resulting in the operation of a market day business. Students will also study a Human Resource Issue and the market.

THIS COURSE LEADS TO

NCEA Level 2 Commerce.

APPROXIMATE COST

\$30.00 Workbook
A laptop is strongly recommended for internals.

TEACHER IN CHARGE

Ms Harrington.

NCEA Level 1 Accounting

CREDITS AND ASSESSMENT

- 9 Internal Credits.
- 9 External Credits.

ENTRY CONDITIONS

Open.

WHAT IS THE COURSE ABOUT?

A beginners' course looking at the accounting process for business organisations and individuals. Topics include accounting concepts, processing accounts for a sole proprietor, preparation of accounting statements, analysing and interpreting of accounting reports, and understanding cash management for a small entity.

THIS COURSE LEADS TO

NCEA Level 2 Accounting.

APPROXIMATE COST

\$26.00 Workbook.

TEACHER IN CHARGE

Ms Harrington.

Arts

NCEA Level 1 Visual Art

CREDITS AND ASSESSMENT

- 10 Internal Credits.
- 12 External Credits.

ENTRY CONDITIONS

Students must take Art at Years 9 and 10.
Discretionary (See Page 5).

WHAT IS THE COURSE ABOUT?

This course is designed to support students in the development of concepts, techniques and processes to produce a body of work based on a specific theme and in a variety of media.

THIS COURSE LEADS TO

NCEA Level 2 Visual Art.

APPROXIMATE COST

\$65.00 External folio board costs, print-making materials, take-home paint and brush set, card, canvas, and colour photocopies.

TEACHER IN CHARGE

Mrs Carey.

Arts Progression

Levels 2 and 3 subjects may have prerequisites.

YEAR 10

YEAR 11
LEVEL 1

YEAR 12
LEVEL 2

YEAR 13
LEVEL 3

VISUAL ART

Internal Credits 10
External Credits 12
Prerequisites: Junior Art

VISUAL ART, SCULPTURE, PAINTING AND PRINTMAKING

Internal Credits 8
External Credits 12
Prerequisite: External and Internal Level 1 Achieved

Internal Credits 8
External Credits 14
Prerequisite: External and Internal Level 2 Achieved

DRAMA

Internal Credits 13
External Credits 4
Prerequisites: Year 10 Drama

Internal Credits 13
External Credits 4
Prerequisites: 10 Credits in Level 1 Drama

Internal Credits 13
External Credits 4
Prerequisites: 10 Credits in Level 2 Drama

MUSIC

Internal Credits 22
External Credits 8

Prerequisites: Year 10 Music and a Grade 3 Theory exam and/or learning an instrument for three years

Internal Credits 19
External Credits 5

Prerequisites: Level 1 Music or a Grade 4 Theory exam and/or learning an instrument for four years

Internal Credits 13-20
External Credits 4-11

Prerequisites: Level 2 Music or a Grade 5 Theory Exam

Senior French/Japanese Progression

French and Japanese are not compulsory subjects.
The Head of Department will place students in an appropriate course.

YEAR 11
LEVEL 1

YEAR 12
LEVEL 2

YEAR 13
LEVEL 3

FRENCH / JAPANESE

Internal Credits
Assessment will be based on the following:
Speech 4
Conversation 5
Writing 5

External Credits
Assessment will be based on the following:
Listening 5
Reading 5

Internal Credits
Assessment will be based on the following:
Speech 4
Conversation 5
Writing 5

External Credits
Assessment will be based on the following:
Listening 5
Reading 5

Internal Credits
Assessment will be based on the following:
Speech 3
Conversation 6
Writing 5

External Credits
Assessment will be based on the following:
Listening 5
Reading 5

NCEA Level 1 Drama

CREDITS AND ASSESSMENT

- 13 Internal Credits.
- 4 External Credits.

ENTRY CONDITIONS

It is recommended that students take Drama at Year 10. Discretionary (See Page 5).

WHAT IS THE COURSE ABOUT?

This course explores drama techniques, elements, conventions and technologies through practical activities and theoretical studies. Students will perform technical and production roles, in addition to acting roles, in a class production. Students also study Victorian Melodrama in both a scripted context and in a response format in the external paper. Students are encouraged to participate in the cultural extra—curricular opportunities such as Production, Sheilah Winn or ShowQuest to further their understanding of drama practice.

THIS COURSE LEADS TO

NCEA Level 2 Drama.

TEACHER IN CHARGE

Mrs Hanson.

NCEA Level 1 Music

CREDITS AND ASSESSMENT

- 22 Internal Credits.
- 8 External Credits.

ENTRY CONDITIONS

Automatic: for students who have completed a semester of Year 10 Music and are pursuing tuition on a solo instrument. For students who have sat Grade 3 Theory and/or been learning an instrument for three years. Discretionary (see Page 5).

WHAT IS THE COURSE ABOUT?

This course provides the student with a balance of practical and academic music studies and ideally includes a commitment to the school ensembles. Students need to have completed this level before being considered for Level 2 Music entry.

THIS COURSE LEADS TO

NCEA Level 2 Music.

APPROXIMATE COST

\$20.00 Theory book, course booklet, assignments and discs. Additional charges for competitions and tours.

TEACHER IN CHARGE

Mrs Balchin.

Languages

NCEA Level 1 French

CREDITS AND ASSESSMENT

- 14 Internal Credits.
- 10 External Credits.

ENTRY CONDITIONS

Automatic: for students who have studied French in Year 10. Discretionary (See Page 5).

WHAT IS THE COURSE ABOUT?

Building on language already learnt in Years 9 and 10. Year 11 French covers the following topics: travel and getting around France, one's country, holidays, daily routines, making social arrangements, entertainment and leisure activities.

THIS COURSE LEADS TO

NCEA Level 2 French.

APPROXIMATE COST

- \$32.00 Workbook.
- \$20.00 Subscription to Language Perfect.

TEACHER IN CHARGE

Mme Juhel.

NCEA Level 1 Japanese

CREDITS AND ASSESSMENT

- 14 Internal Credits.
- 10 External Credits.

ENTRY CONDITIONS

Automatic: for students who have studied Japanese in Year 10. Discretionary (See Page 5).

WHAT IS THE COURSE ABOUT?

NCEA Level 1 Japanese teaches students to use written and spoken Japanese flexibly in a variety of routine situations.

THIS COURSE LEADS TO

NCEA Level 2 Japanese.

APPROXIMATE COST

- \$32.00 Workbook.
- \$20.00 Subscription to Language Perfect.

TEACHER IN CHARGE

Mrs Hayakawa-Buist.

Senior Technology Progression

Level 1: No entry prerequisites for most Technologies, but experience in Year 10 preferred.
 Level 2: Students must have passed the course at Level 1 or discuss with the teacher.

YEAR 10

**YEAR 11
LEVEL 1**

**YEAR 12
LEVEL 2**

**YEAR 13
LEVEL 3**

DIGITAL TECHNOLOGIES

Internal Credits 17
 External Credits 3
 Plus Extra Optional 3

Internal Credits 13
 External Credits 3
 Plus Extra Optional 6

Internal Credits 13
 External Credits 3
 Plus Extra Optional 6

COMPUTER PROGRAMMING

Internal Credits 14
 External Credits 3
 Plus Extra Optional 6

Internal Credits 14
 External Credits 3
 Plus Extra Optional 6

DESIGN AND VISUAL COMMUNICATION

Internal Credits 13
 External Credits 6
 Plus Extra Optional 3

Internal Credits 13
 External Credits 7
 Plus Extra Optional 6

Internal Credits 12
 External Credits 4
 Plus Extra Optional 6

Prerequisites
 Level 1 Credits 12
 (Comprising of 1 Internal and 1 External)

Prerequisites
 Level 2 Credits 10
 (Comprising of 1 Internal and 1 External)

SOFT MATERIALS

Internal Credits 14
 External Credits 4

Internal Credits 12
 External Credits 4

ENGINEERING

Internal Credits 10
 External Credits 4
 Unit Standards 16

Internal Credits 10
 External Credits 4
 Unit Standards 12

Internal Credits 13
 External Credits 4
 Plus Extra Optional 6

Prerequisites
 Level 1 Credits 12
 (Comprising of 1 Internal and 1 External)

Prerequisites
 Achievement Standards Credits 6
 (At pass level in any of the
 technology generic standards)

HOME ECONOMICS AND HOSPITALITY

Internal Credits 17
 External Credits 4

Internal Credits 16
 External Credits 4

Internal Credits 16
 External Credits 4

FURNITURE MAKING TECHNOLOGY

Unit Standards 22

Unit Standards 23

Technologies

NCEA Level 1 Furniture Making Technology

CREDITS AND ASSESSMENT

22 Internal Level 2 Credits.

ENTRY CONDITIONS

Discretionary: students must have satisfactorily completed the Technology Hard Materials course in Year 10 and have the potential to achieve NCEA Furniture Making in Level 1.

WHAT IS THE COURSE ABOUT?

Introduction to furniture making. Students will make three practical projects during the year. Students will also complete written unit standards to support their practical work.

THIS COURSE LEADS TO

NCEA Level 2 Furniture Making.

APPROXIMATE COST

\$125.00 Cabinet.
\$ 80.00 Cheval Mirror.
\$125.00 deposit required. Payment invoiced as projects completed.

TEACHER IN CHARGE

Mr Chalk.

NCEA Level 1 Design and Visual Communication

CREDITS AND ASSESSMENT

13 Internal Credits.
6 External Credits (with 3 optional External Credits)

ENTRY CONDITIONS

Discretionary: students should have satisfactorily completed the Graphics course in Year 10.
Discretionary (See Page 5).

WHAT IS THE COURSE ABOUT?

This course focuses on ways to visually explore design ideas through project-based briefs, covering both spatial and product design. Students explore techniques and strategies for design and effective means of visually communicating their design ideas. Students have opportunities to express their ideas using a range of modes and media, from freehand sketching and rendering, technical drawing, and modelling, through to computer-aided design and presentation.

THIS COURSE LEADS TO

NCEA Level 2 Graphics.

APPROXIMATE COST

\$10.00 Colour printing and as per stationery list.

TEACHER IN CHARGE

Ms Mossop.

NCEA Level 1 Engineering Technologies

CREDITS AND ASSESSMENT

10 Internal Credits.
4 External Credits.
16 Unit Standards.

ENTRY CONDITIONS

Open.

WHAT IS THE COURSE ABOUT?

This is an introductory qualification for students interested in Mechanical Engineering Technology. Students are offered both Technology Engineering Achievement Standards and Engineering Unit Standards. The qualification is intended to provide students with a well-balanced, practically-orientated course. Students will learn a variety of basic engineering skills and knowledge.

THIS COURSE LEADS TO

NCEA Level 2 Engineering Technology.

APPROXIMATE COST

\$10.00 Clearfile and Assessment sheets.
\$55.00 Consumables.
Plus individual project materials costs.

TEACHER IN CHARGE

Mr Finnigan.

NCEA Level 1 Digital Technologies

CREDITS AND ASSESSMENT

17 Internal Achievement Standards Credits.
6 External Achievement Standards Credits. (with 3 optional External Credits)

ENTRY CONDITIONS

Open (prior knowledge recommended).

WHAT IS THE COURSE ABOUT?

This course encourages students to apply their existing knowledge and expand their learning in context based projects. Topics will include computer programming, core Computer Science concepts, databases, proposal development and iterative process to develop a digital outcome.

THIS COURSE LEADS TO

NCEA Level 2 Digital Technologies and/or NCEA Level 2 Computer Programming.

APPROXIMATE COST

Printing credits.
Students will need to have their own headphones.

TEACHER IN CHARGE

Ms Hamilton.

Senior Physical Education Progression

The Head of Department will make the final decision regarding course acceptance.

**YEAR 11
LEVEL 1**

**YEAR 12
LEVEL 2**

**YEAR 13
LEVEL 3**

PHYSICAL EDUCATION

Internal Credits 18-24

Internal Credits 18-24

Internal Credits 18-24

Prerequisites

Students who have completed 11 PED will have an advantage

Prerequisites

Automatic for those with 16 Level 2 PED Credits

OUTDOOR EDUCATION

Internal Credits 18-24

Unit Standards 24

Achievement Standards 6

Open Entry, although you need to be physically fit. Higher fees apply for this course

Unit Standards 24

Achievement Standards 10

Higher fees apply for this course

Senior Health Progression

The Head of Department will make the final decision regarding course acceptance.

**YEAR 11
LEVEL 1**

**YEAR 12
LEVEL 2**

**YEAR 13
LEVEL 3**

HEALTH

Internal Credits 16
External Credits 4

Internal Credits 16
External Credits 4

Internal Credits 15
External Credits 5
Plus Extra Optional 6

Prerequisites

12 Credits in Level 2 English or Level 2 Health with Teacher approval

YEAR 10

NCEA Level 1 Home Economics and Hospitality

CREDITS AND ASSESSMENT

17 Internal Credits.
4 External Credits.

ENTRY CONDITIONS

Automatic for students who successfully complete Year 10 Food Technology.

WHAT IS THE COURSE ABOUT?

This course explores hygiene and safe food handling, preparation of meat, eggs, cheese, fruit and vegetables for a hospitality environment, nutrition and food packaging. Each of the topics requires students to complete a written assignment as well as a practical cooking component.

THIS COURSE LEADS TO

NCEA Level 2 Home Economics.

COST

\$37.00 Workbooks.
\$50.00 Ingredients.
Students will be required to provide some ingredients for practical lessons.

TEACHER IN CHARGE

Mrs Nilsson.

NCEA Level 1 Soft Materials Technology

CREDITS AND ASSESSMENT

14 Internal Credits.
4 External Credits.

ENTRY CONDITIONS

Open: Soft Materials in Year 10 is an advantage.

WHAT IS THE COURSE ABOUT?

This is a course for students motivated to work with design and fabric. The programme is project-based and suits students who wish to be creative and inventive. Projects include garment construction and patchwork. Students work through a number of design briefs, solving practical problems along the way.

THIS COURSE LEADS TO

CPIT and Polytech courses.

APPROXIMATE COST

\$60.00 Consumables, material, equipment, patterns and notions supplied. Students keep the projects they make.

TEACHER IN CHARGE

Ms Kelly.

Physical Education, Health, and Sport

NCEA Level 1 Physical Education

CREDITS AND ASSESSMENT

18–24 Internal Credits.

ENTRY CONDITIONS

Open.

WHAT IS THE COURSE ABOUT?

This course is designed for those who are keen to further their theoretical knowledge of Physical Education and body function. It consists mainly of theoretical components based on practical sporting contexts.

THIS COURSE LEADS TO

NCEA Level 2 Physical Education.

APPROXIMATE COST

\$28.50 Student Workbook.

TEACHER IN CHARGE

Mr Dickens.

NCEA Level 1 Health

CREDITS AND ASSESSMENT

16 Internal Credits.
4 External Credits.

ENTRY CONDITIONS

Open.

WHAT IS THE COURSE ABOUT?

The main emphasis is on hauora (well-being) and introduces a basic understanding of socio-ecological perspectives (personal, interpersonal and societal influences, consequences and strategies) and elementary aspects of health promotion among the strategies for goal setting and change. The goal is to equip students with the skills, knowledge and understanding to maintain and develop personal well-being and to introduce the concept of social justice. The main topics include well-being and goal setting, interpersonal skills, sexuality issues, managing changing states of health and drug issues.

THIS COURSE LEADS TO

NCEA Level 2 Health.

Career options could include social work, education, healthcare, health promotion, community health and many more.

APPROXIMATE COST

\$28.00 Student Workbook.

TEACHER IN CHARGE

Ms Mallinder.

NCEA Level 1 Outdoor Education

CREDITS AND ASSESSMENT

Internal assessment of a combination of Physical Education achievement standards and Outdoor Education unit standards.

ENTRY CONDITIONS

Open. Students need to be physically fit and fully committed to all modules within the course and all opportunities that are provided.

WHAT IS THE COURSE ABOUT?

This is an introductory course to Outdoor Education in New Zealand. It involves developing students' knowledge and skills to become safe and confident in the outdoors.

THIS COURSE LEADS TO

Year 12 Outdoor Education.

APPROXIMATE COST

\$250.00

TEACHER IN CHARGE

Mr Dickens.

Alternatives

DISTANCE EDUCATION COURSES

Darfield High School sees subjects taken through distance education options as a valuable extension of its curriculum. It provides students with an excellent opportunity for self-directed study.

VIDEO CONFERENCING—NET NZ

Years 11, 12, and 13

Prerequisite: Open to senior students.

WHAT IS NET NZ?

NetNZ is a cluster of 20 secondary and area schools in the greater Canterbury region that engages in eLearning to better meet the needs of students and teachers.

NetNZ is a member of the Virtual Learning Network (VLN) which connects the eLearning clusters and enables the delivery of a range of online courses using a range of technologies.

HOW DOES IT WORK?

Each of the schools offers a course, a teacher and an eDean that allows them to enrol students in courses offered by schools across the Virtual Learning Network (NZ).

Generally a course consists of eight to 14 students who are taught by an eTeacher (who will be from a participating school) using an approach that blends face-to-face style video conference tutorials with a mix of online and paper based learning. You would typically find a course consists of students from five to seven different schools throughout the country. Much of the learning will be accessed through an online space where students can receive work, download assignments, and interact with the teacher and other students.

The role of the eDean in a school is to support the students and provide an important line of communication between teacher and students. This means students are not just left on their own to cope if they are having difficulties.

There is a NetNZ brochure available to any students who are looking at VC as an option for a particular subject.

Course costs will vary depending on school and course. For more information, please email Mr Adams, ta@darfield.school.nz

Criteria for entry to Video Conferencing are set by the enrolment policies of Darfield High School and by the NetNZ Network.



Useful Websites

CAREERS NZ

A New Zealand Government Website. This website is full of useful information to help with Career choices, from planning your career, job hunting, help writing a CV, to Careers and Education choices.



<https://www.careers.govt.nz/>

YOUTH GUARANTEE

Youth Guarantee initiatives are about improving the transition from school to further study, work or training. They provide a wider range of learning opportunities, make better use of the education network, and clarify pathways from school.



<http://youthguarantee.net.nz/>

OCCUPATION OUTLOOK

A New Zealand Government Website. Occupation Outlook is a mobile app. It is a great tool for exploring study and career options, with extensive information on labour supply and demand in over 100 occupations in New Zealand.



<http://occupationoutlook.mbie.govt.nz>

Check out
the DHS
Careers
webpage

Careers

@ Darfield High School

<https://sites.google.com/darfield.school.nz/careers>

Virtual Learning Network

These courses require one period a week with a teacher through video conferencing and at least three hours of independent study per week. Most courses will be using Google online learning spaces.

SOCIAL SCIENCES	LEVEL 1	LEVEL 2	LEVEL 3
Geography	√	√	√
History	√	√	√
Classical Studies		√	√
Social Studies			
Tourism			√
Economics	√	√	√
Psychology		√	√
Business Enterprise			
Media Studies		√	√

MATHEMATICS AND STATISTICS	LEVEL 1	LEVEL 2	LEVEL 3
Mathematics (Generic)	√	√	√
Mathematics with Statistics			√
Mathematics with Calculus			√
Accounting	√	√	√

LANGUAGES	INTRODUCTORY	LEVEL 1	LEVEL 2	LEVEL 3
Te Reo Maori	√	√	√	√
Spanish	√	√	√	√
German	√		√	√
Japanese	√	√	√	
French	√	√	√	√

TECHNOLOGY	LEVEL 1	LEVEL 2	LEVEL 3
Graphics	√	√	√
Computing			
Digital Technologies	√	√	√
Food and Nutrition			
Food and Hospitality			
Electronics		√	√

HEALTH AND PHYSICAL EDUCATION	LEVEL 1	LEVEL 2	LEVEL 3
Health	√		
Physical Education		√	√

SCIENCE	LEVEL 1	LEVEL 2	LEVEL 3
Science (Generic)	√		
Physics		√	√
Biology		√	√
Agriculture (Telford)		√	√
Horticulture and Agricultural Science			√
Chemistry		√	√

THE ARTS	LEVEL 1	LEVEL 2	LEVEL 3
Visual Art			
Art History		√	√
Photography		√	√
Dance			
Drama			
Music	√	√	√

Background Information For Careers

CAREER	BACKGROUND REQUIRED
Agriculture—Diploma	Completion of Year 12 and NCEA Level 2 recommended.
Architectural Technology—Diploma	Completion of Year 12 and NCEA Level 2 in Mathematics and Physics.
Defence Forces	A wide range of careers is available with differing entry requirements. NCEA Level 2 minimum.
Automotive Trades	NCEA Level 1 English and Mathematics. Useful subjects are Science, Graphics, Workshop Technology.
Building	NCEA Level 1 English, Mathematics. Woodwork or Furniture Making and Graphics an advantage.
New Zealand Diploma in Business	Completion of Year 12 and NCEA Level 2 in four subjects or completion of Level 3 programme of study. Literacy 8 x Level 2 Credits, Numeracy 14 x Level 1 Credits
Childcare—Diploma	Completion of Year 12 and NCEA Level 2 required.
Chef—Certificate	English NCEA Level 1.
Design—Diploma	Good NCEA Level 3 results. Specified portfolio of work. Completion of Year 12 and NCEA Level 2 Portfolio of work.
Electrical Engineering—Technician	Completion of Year 12 and NCEA Level 2 in Mathematics, Science, Technology.
Hairdressing—Certificate	Completion of Year 12 and NCEA Level 2 an advantage.
Horticulture—Diploma	Completion of Year 12 and NCEA Level 2 recommended. Agriculture, Biology and English Level 2 recommended.
Hospitality Management—Diploma	Age 18. Completion of Year 12 and NCEA Level 2 including English, Accounting, Economics and Keyboard Skills preferred.
Police	Completion of Year 12 and NCEA Level 2.
Quantity Surveying—Diploma	Completion of Year 12 and NCEA Level 2, including Mathematics.
Science—Diploma	Completion of Year 12 and NCEA Level 2 Biology, Chemistry and Mathematics.
Travel and Tourism—Certificate	Completion of Year 12 and NCEA Level 2.

NOTES:

- The subjects here are only a guide to what is needed to begin training. More detailed information can be obtained from the Careers Adviser.*
- Tertiary Institutions will offer different courses and entry requirements may differ.*

Recommended Subjects for Year 13

** Compulsory
* Recommended

These represent only a small selection of possible careers and the requirements listed here are minimum ones. For further information see the Careers Advisor.

Medical	Chemistry	Biology	Physics	Statistics	Calculus	English Rich	Other
Health Science	**	**	**	** or *	*	*	
Biomedical Sciences	**	**	**			*	
Oral Health		**				**	
Dental Technology	**	*	**	* or *	*	*	Year 12 Biology
Medical Radiation Therapy		**	**	** or **	**	**	
Nursing	**	**				**	PE may also be helpful
Occupational Therapy							PE may also be helpful
BPhED Majors	Chemistry	Biology	Physics	Statistics	Calculus	English Rich	Other
Exercise and Sport Science		**		*			PE, Chem & Physics
Exercise Prescription and Mgmt		**		*			PE
Professional Studies		**					PE
Sport Coaching		*		*		*	PE
Sport Management							PE
Sport and Leisure Studies		**		*			PE
BE (HONS)	Chemistry	Biology	Physics	Statistics	Calculus	English Rich	Other
Chemical and Process Engineering	**		**		**		
Civil Engineering	**		**		**		
Computer Engineering			**		**		
Electrical and Electronic Engineering			**		**		
Forest Engineering	**		**		**		
Mechanical Engineering	**		**		**		
Mechatronics Engineering			**		**		
Natural Resources Engineering	**		**		**		
BSc Majors	Chemistry	Biology	Physics	Statistics	Calculus	English Rich	Other
Anatomy and Structural Biology	**	**		*			
Biochemistry	**	**		*			
Botany		**					
Chemistry	**		*	* or *	*		Year 12 Maths & Physics
Clothing and Textile Sciences	*	*		* or *	*	*	Social Sciences (History, Economics)
Computer Science				* or **	**	*	
Ecology		**		*			Geography, Sciences
Economics and Statistics				**	**	*	Economics
Electronics			**		**		DigiTech, Electronics
Energy Studies			**		**		
Food Science	**	**	*	*	*		Business Studies
Forestry		*		*			Year 12 Chemistry
Genetics	**	**		* or *	*		
Geography				**			Geography, Sciences
Geology	*		*	* or **	**		Geography, Sciences
Human Nutrition (Dietetics)	**	**		**		*	
Information Science				* or *	*	*	DigiTech
Land Planning and Development			*	*	**	*	Geography
Mathematics				**	**		DigiTech

Microbiology	**	**					
Neuroscience	**	**	*	*			
Pharmacology	**	**					
Physics			**		**		
Physiology	**	**	*				
Plant Biology	**	**					
Psychology		**		**		*	
Statistics				**	or **		
Survey Measurement			*	*	**	*	Geography
Vet Science	**	**	**	**	**		
Zoology		**		**			
BAppSci Majors	Chemistry	Biology	Physics	Statistics	Calculus	English Rich	Other
Applied Geology	*		*	* or **			Geography, Sciences
Aquaculture and Fisheries	**	**		** or *			Geography, Sciences
Computational Modelling			*	*	**		Computer Studies
Energy Management			**		**		
Environmental Management		*		** or **			Geography, Sciences
Consumer Food Science		**		* or			Home Economics, Business Studies
Forensic Analytical Science	**	**	*	** or *			
Geographic Information Systems				* or **			Computer Studies, Geography
Molecular Biotechnology	**	**		*			
Software Engineering				*	**		Computer Studies
Sport and Exercise Nutrition	**	**		*			PE
Telecommunications			**	* or **			Computer Studies
Clothing and Textile Science	*	*		* or *			History, Economics, Tech
BSci Human Nutrition	**	**		**		*	
BComm Majors	Chemistry	Biology	Physics	Statistics	Calculus	English Rich	Other
Accounting				**	*	*	Accounting
Economics				**	**	*	Economics
Economics and Statistics				**	**	*	Economics
Finance				**	**	*	Accounting, Economics
Information Science				**	*	*	Computer Studies, Accounting
International Business				**	*	*	Economics, a language
Management				**		*	Business Studies
Marketing Management				**		*	Business Studies
Tourism				**		*	Geography, Tourism
Other Specialist Degrees	Chemistry	Biology	Physics	Statistics	Calculus	English Rich	Other
ARB (BA)						**	
Architecture			*	*	*		Art and Graphics
Fine Arts (BFA)						*	Visual Art, Design, Painting, Art History
Law (LLB)						**	Drama
Music (MusB)						*	Music
Social Work (BSW)						**	
Speech and Language Therapy (BSLT)		**		*		*	Science L2
Surveying (BSurv)			*	*	**	*	Geography, Computer Studies
Teaching (Primary) (ECE)						*	Yr 12 English, Maths & Science
Teaching (Secondary)						*	Focus on possible teaching
Theology (BTheol)						*	Social Sciences

UNIVERSITY ENTRANCE

TO GAIN

STUDENTS
MUST ACHIEVE

NCEA LEVEL 3

PLUS
14 LEVEL 3 CREDITS
In An Approved Subject

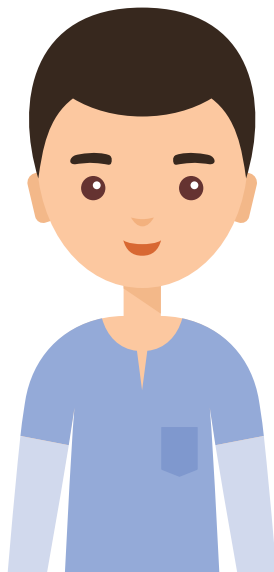
PLUS
14 LEVEL 3 CREDITS
In An Approved Subject

PLUS
14 LEVEL 3 CREDITS
In An Approved Subject

10 PLUS
LEVEL 1 CREDITS
Numeracy Credits

5 PLUS
LEVEL 2 CREDITS
Reading Credits

5 PLUS
LEVEL 2 CREDITS
Writing Credits



Address: 7 McLaughlins Road
Email: admin@darfield.school.nz
Web: darfield.school.nz

PO Box 5
Darfield 7541
New Zealand

Phone: +64 3 318 8411